

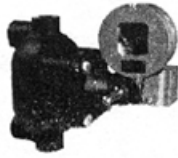


**LIQUID LEVEL CONTROLS**  
**TYPES 75-KM & 75-KXM — GENERAL PURPOSE**  
**TYPES 76-KEM & 76-KXEM — EXPLOSION-PROOF**

BULLETIN IN-416

**INSTALLATION AND OPERATING INSTRUCTIONS**

**GENERAL PURPOSE TYPE**



**TYPE 75 KM**

TORQUE TUBE CONSTRUCTION  
 FOR PRESSURE TO 300 PSI

**TYPE 75 KXM**

TORQUE TUBE CONSTRUCTION  
 FOR PRESSURE TO 400 PSI

- **LOCATION**  
 Select location recommended by equipment manufacturer.
- **MOUNTING:**  
 Use one inch pipe for connections and install control so that the center of float casting or "Normal Level Line" is at the desired level.
- **FLOAT LEVEL ADJUSTMENT (Illustration No. 1)**  
 Is shown as "C". Turning up screw "C" as far as it will go raises the operating point 1-1/4" above normal level line. Turning down on screw "C" lowers level 5/8" below normal level line.
- **FURTHER ADJUSTMENTS (ALL TYPES)** of the operating level can be made by changing the angle of the Mercoid mercury switches. Remove mercury switches from clip. **CAUTION** - mercury switches are secured in clips with shellac, so carefully pry clip prongs with fingers to break the seal. Loosen hexagon head screw and rotate mercury switch clip assembly as desired.
- **WIRING**  
 Wire in accordance with local electrical codes or equipment manufacturer's instructions. See nameplate attached to control for electrical rating.

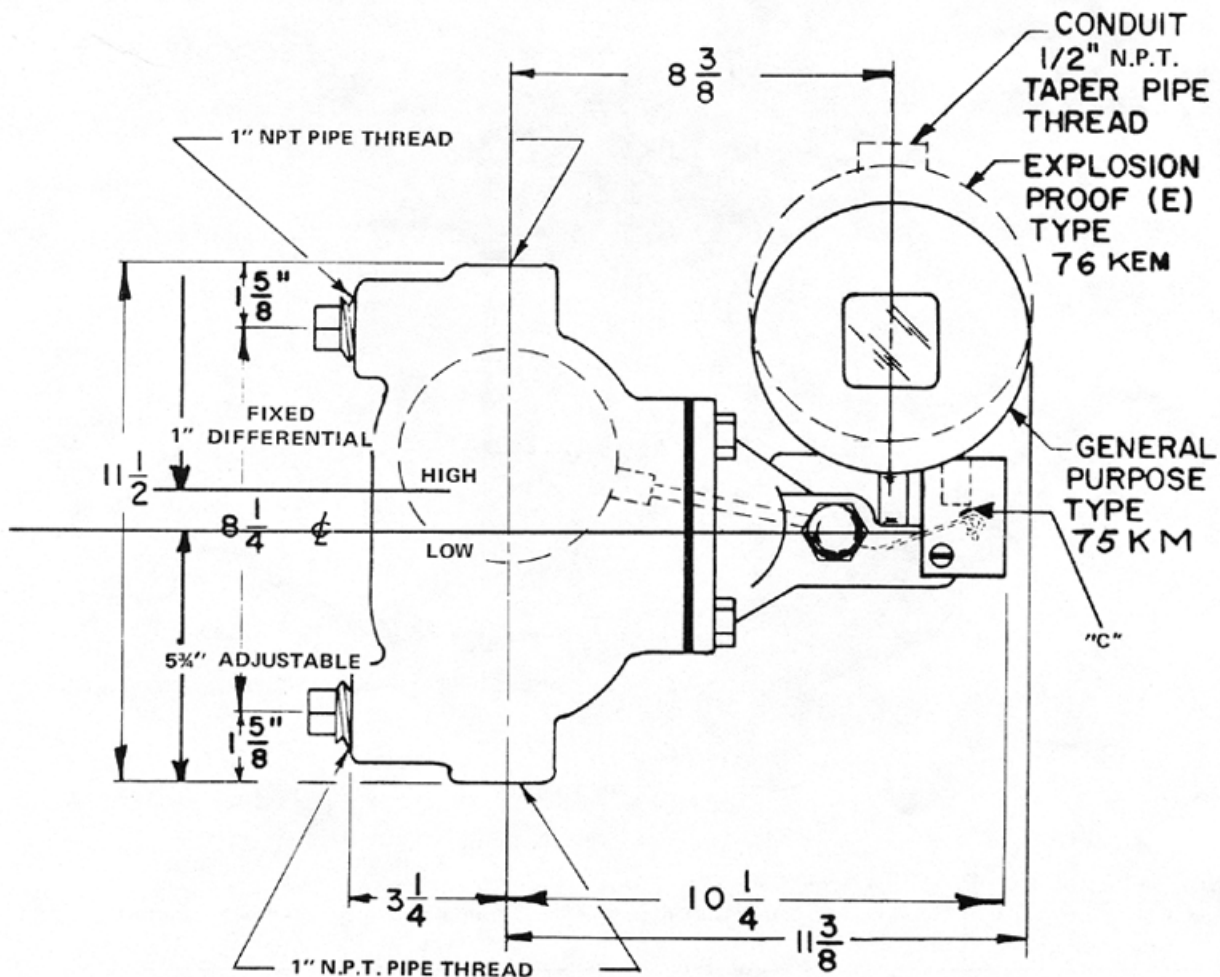


Illustration No. 1

SEE REVERSE SIDE FOR EXPLOSION-PROOF TYPE

## INSTALLATION INSTRUCTIONS

### EXPLOSION PROOF TYPE



**TYPE 76 KEM**  
TORQUE TUBE CONSTRUCTION  
FOR PRESSURE TO 300 PSI

**TYPE 76 KXEM**  
TORQUE TUBE CONSTRUCTION  
FOR PRESSURES TO 400 PSI

- **LOCATION**  
Select location recommended by equipment manufacturer.
- **MOUNTING**  
Use one inch pipe for connections and install control so that center of float casting or "Normal Level Line" is at the desired level.
- **ADJUSTMENTS**  
Float adjustment is indicated as "D" (Illustration No. 2). Remove guard to adjust connection bar. Shortening connection bar lowers operating point. Lengthening connection bar raises operating point.
- **FURTHER ADJUSTMENT OF THE OPERATING LEVELS ON ALL TYPES** can be made by changing the angle of the Mercoid mercury switches. Loosen screw which holds mercury switch assembly to shaft and rotate assembly to desired position.
- **WIRING**  
Wire in accordance with local electrical codes or equipment manufacturer's instructions.

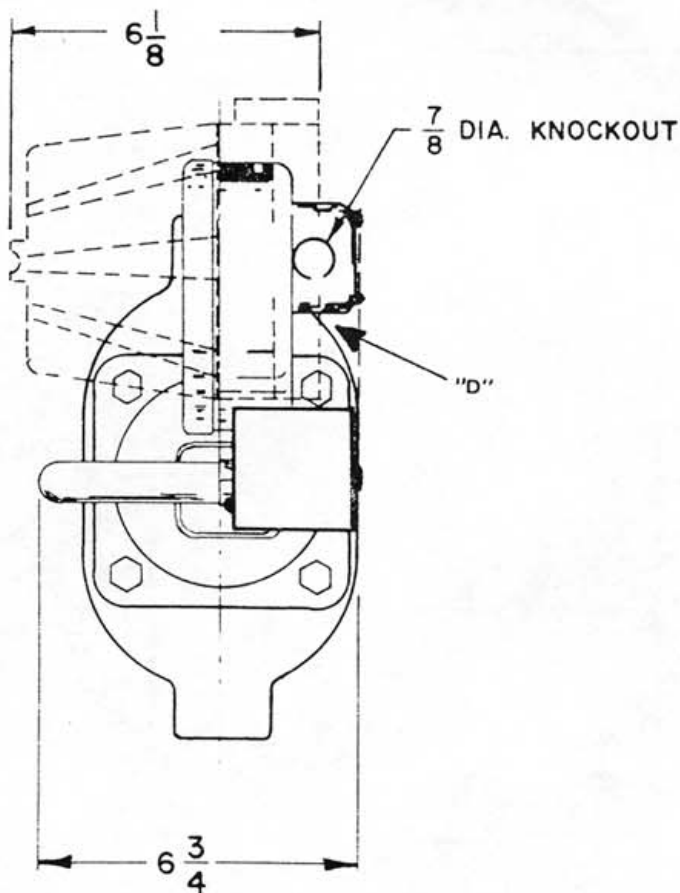


Illustration No. 2

General Purpose / Explosion Proof Types--

Note. Cold shock or water hammer must be avoided, as this condition may damage the float and prevent proper operation of the control.



**MERCOID DIVISION**  
**DWYER INSTRUMENTS, INC.**  
P.O. BOX 258  
MICHIGAN CITY, IN 46360 (USA)  
TELEX 25916 PHONE 219/879-8000

©Copyright 1989 Dwyer Instruments, Inc.  
Printed in U.S.A. 6/89  
FR 96-442045-00