

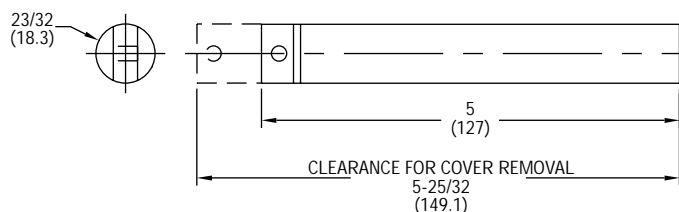


## Series WL Waterproof Logger

### Specifications - Installation and Operating Instructions



SHOWN WITHOUT CAP



**Monitor and record temperature** in hostile or wet environments with Series WL Waterproof Logger. The Series WL is housed in a rugged stainless steel or aluminum casing and can withstand an operating pressure range up to 2000 psi (138 bar).

The logger can store up to 244,800 readings with user configurable sampling methods and sampling rates. The logger is designed with an internal NTC thermistor for measuring temperatures from -40 to 185°F (-40 to 85°C) or 50 to 275°F (10 to 135°C). Use the Series WL for temperature monitoring in wastewater treatment plants, environmental monitoring, process monitoring, agriculture, medical and pharmaceutical industries. Software and connecting cable included.

#### O-RING SPECIFICATIONS

The type of O-ring to be used with the Logger depends upon your application. Each O-ring is designed for use with certain fluids only. The table below summarizes the compatibility with various fluids.

Material	Use with these fluids:	DO NOT Use with these fluids:
Fluoroelastomer Amines	Petroleum Oils	Acetone, H <sub>2</sub> S, Hot Water, Gasoline, Transmission Fluid
Ethylen (EPDM) Loggers are shipped with this	Alcohols, Brake Fluids, Propylene, Refrigerants	Petroleum Oils, Diester Lubricants

Important: It is recommended that the O-ring be replaced every 3 months or earlier if wear and tear is visible. You must ensure that the O-ring material selected is compatible with the environment where it will be used. The size of the O-ring is AS568A 111.

#### SPECIFICATIONS

**Temperature Range:** WL-1X: -40 to 185°F (-40 to 85°C);

WL-2X: 50 to 275°F (10 to 135°C).

**Memory Size:** 244,800 readings.

**Accuracy:** WL-1X: ±0.3°F between 52 to 158°F (±0.2°C between 0 to 70°C); WL-2X: ±0.9°F (±0.5°C).

**Clock Accuracy:** ±2 seconds per day.

**Resolution:** 8-bit.

**Sampling Method:** Continuous (first in – first out); Stop when full.

**Sampling Rates:** User selectable rates, 8 seconds to 34 minutes.

**Computer Requirements:** IBM PC or 100% compatible with at least one free serial port, 2MB of RAM memory and 2MB of hard disk space.

**Software Requirements:** Windows® 3.1, 95, 98, ME, NT, 2000, or XP.

**Power Requirements:** Internal 3.6V lithium. 3-year approximate life (factory replaceable).

**Housing:** WL-10 & WL-20: Aluminum; WL-11 & WL-21: Stainless steel.

**Mounting:** Locking hole on cap.

**Weight:** WL-10 & WL-20: 1.8 oz (51 g); WL-11 & WL-21: 4 oz (112 g).

#### MAINTENANCE

The Series WL is not field serviceable (except for O-ring replacement) and should be returned if repair is needed (field repair should not be attempted and may void warranty). Be sure to include a brief description of the problem plus any relevant application notes. Contact customer service to receive a return goods authorization number before shipping.