



# Durablock® Solid Plastic Stationary Gages

Dwyer solid plastic stationary gages – or draft gages – are offered in inclined and vertical (well-type) styles for highly accurate laboratory or general industrial service, for measurement of low range gas and air pressures, positive, negative or differential. To assure the accuracy required in instruments of this type, all machining of bores and wells is to the highest standards of precision backed by Dwyer's years of experience in the fabrication of acrylic instruments.

## Design and Service Features

- **1" Thick Acrylic Plastic Body** is a solid block, virtually unbreakable, stable and free of the danger of distortion.
- **Drilled Bores Accurate To  $\pm .0002$ "** is stable, free of bends or crooks, will never require recalibration because of distortion.
- **Selected Gage Oil** with high wettability characteristics forms a consistent, well shaped meniscus for most accurate reading.
- **Adjustable Reflective Polished Aluminum Scales** with thumbscrew locking for easy zeroing.
- **Parallax-Free Reading** for maximum accuracy and consistency is achieved by simply aligning the meniscus with its image reflected in the scale.
- **Over Pressure Safety Traps** prevent loss of fluid due to over range pressures or surges in pressure. (Not required on No. 215.)
- **Leveling Adjustment** for inclined style gages is achieved by simply loosening a locking thumb screw on the side or bottom of the gage, adjusting with reference to the integral sensitive ground glass bubble level and retightening.
- **Heavy Gauge Steel Mounting Panels** are gray hammerloid finished.

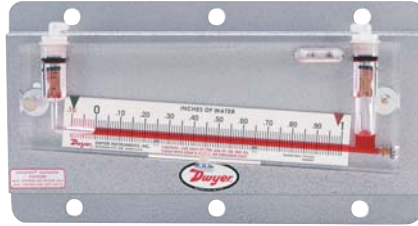


Fig. 6-1. No. 200.5 solid plastic inclined style stationary gage with .10-0-1.0" w.c. range.



Fig. 6-2. No. 310 solid plastic vertical style stationary gage with 0-10" w.c. range.



Fig. 6-3. No. 246 solid plastic inclined style stationary gage with 0-6" w.c. range.

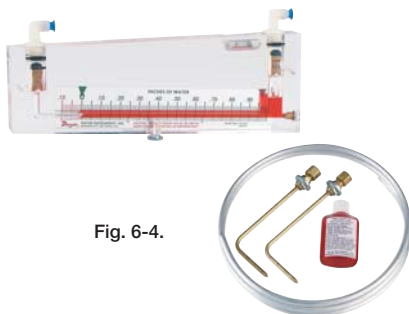


Fig. 6-4.

## Kits For Air Filter Gage Service

Dwyer solid plastic gages and other gages are available in kits especially developed for air filter gage service. They include the gage, two static pressure tips with integral compression fittings and two 5 foot lengths of 1/4" aluminum tubing. The static pressure tips are installed in the duct upstream and downstream of the filter and connected to the gage to provide a continuous visual indication of the stat-

ic pressure drop across the filter. When the filter's resistance in terms of static pressure drop reaches the maximum specified by the filter manufacturer, it is an indication that the filter should be cleaned or replaced.

For complete details on Dwyer Air Filter Gage kits, refer to Pressure Section, Air Filter Gages and Switches.



# Ranges And Dimensions

Suitable for Total Pressures up to 100 psig, Temperatures up to 150°F.  
Accuracy ±2% of Full Scale ( 1% on Models 215, 244, 246 only)

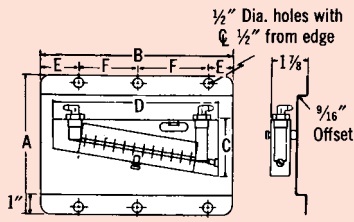


Fig. 7-1.

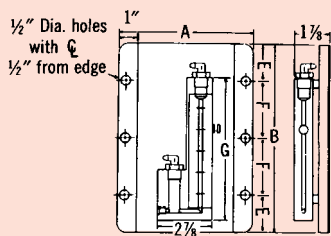


Fig. 7-2.

## MODELS

Model No.	Range Inches of Water	Minor Scale Divisions	Scale Length Inches	Dimensions, Inches						Weight lbs.-oz.
				A	B	C	D	E	F	
200.5	.10-0-1.0	.01	8 7/8	7	13	3 1/16	11 1/2	2	4 1/2	3-11
201	.05-0-.50	.01	5 1/2	7	10	3 1/16	8 1/4	2	3	2-12
202.5	.20-0-2.0	.01	8 3/4	9	13	5 1/8	12	2	4 1/2	4-7
209	.20-0-3.0	.02	8 3/4	9	13	7	11 1/4	2	4 1/2	4-11
215	.05-0-.25	.005	6	7	10	3 1/16	9 1/2	2	3	2-14
244	0-4	.02	13 1/4	11	16 1/2	8 1/8	15 3/8	4	8 1/2	9-11
246	0-6	.02	20	13 1/2	23	11	22	4	15	13-14

NOTE: Model 200.5 replaces Model 200. Model 202.5 replaces model 202.

## INCLINED TYPE

## MODELS

Model No.	Range, Inches of Water	Minor Scale Divisions	Scale Length Inches	Dimensions, Inches					Weight lbs.-oz.
				A	B	E	F	G	
300	0-4	.10	4 1/2	7	10	2	3	8 1/4	2-5
306	0-6	.10	7 3/4	7	16	4	4	10 1/2	3-3
308	0-8	.10	9	7	16	4	4	13 1/16	3-7
310	0-10	.10	11 1/4	7	16	4	4	15 1/4	3-10

## VERTICAL OR WELL-TYPE

**STANDARD ACCESSORIES:** One extra bottle of .826 red gage oil, instructions and one set of type "a" connections, described below, unless other connection option is specified.

**A-396A Calibration Pump** — Use as pressure source to calibrate gages, set switches, etc. Has volume adjuster, bleed valve and fine adjustment for pressures up to 72 psi (5 bar). Accessories include barbed fitting, tee connector, three 36 in. lengths of vinyl tubing and instructions.



## Over-Pressure Safety Traps Prevent Fluid Loss



**Fig. 7-3.** Exclusive Dwyer over pressure safety traps assure that over range pressures whether gradual or a sudden surge will not force the liquid out of the gage. Over pressures simply float the cork, force the O-ring over the opening and seal the fluid in the gage. When pressure is reduced, cork drops down releasing the O-ring safety trap opens and the gage continues in operation.

## Connection Options For Dwyer Solid Plastic Stationary Gages

Unless otherwise specified, Dwyer solid plastic stationary gages will be furnished with Type "a" connections consisting of two rapid shutoff type, molded nylon tubing connectors (see Fig. 5-3, page 23), two 3ft. lengths flexible Tygon plastic tubing, and two 1/8" pipe thread adapters.

If so specified on the order, Dwyer solid plastic stationary gages will be furnished with your choice of the following connection options:

**Type "b":** Two molded nylon tubing connectors, rapid shutoff type, one 9' length rubber tubing, and one brass terminal tube.

**Type "c":** Two 1/8" pipe thread openings.

**Type "d":** Two compression fittings for 1/2" O.D copper or aluminum tubing.

**Type "e":** 3-way vent valves, 1/8" S.P.T. to 1/4" metal tubing, at additional cost.

Cat. No. A-315



Fig. 7-4. Type "a" and "b"

Cat. No. A-316



Fig. 7-5. Type "c" with shipping plugs in place.

Cat.Nos. A-316 & A-324



Fig. 7-6. Type "d"

Cat.Nos. A-316 & A-310



Fig. 7-7 Type "e"