



**SERIES AP PRESSURE SWITCHES
WITH MERCURY SWITCHES**

INSTALLATION AND OPERATING INSTRUCTIONS

**TYPE AP and AP-41
With Suffix Nos.
-153, -2, -3, -26, -36, -88, -89**

OPERATION

A variation in control pressure causes the diaphragm to actuate the hermetically sealed mercury switch to open or close the electrical contact.

APPLICATION

TYPE AP with suffix numbers -153, -2, -3, -26, -36, -88, -89 are for use with mediums not injurious to steel, silver solder or Fairprene diaphragm.

TYPE AP-41 with suffix numbers -153, -2, -3, -26, -36, -88, -89 are for use with mediums not injurious to 316 SS and Teflon.

MOUNTING

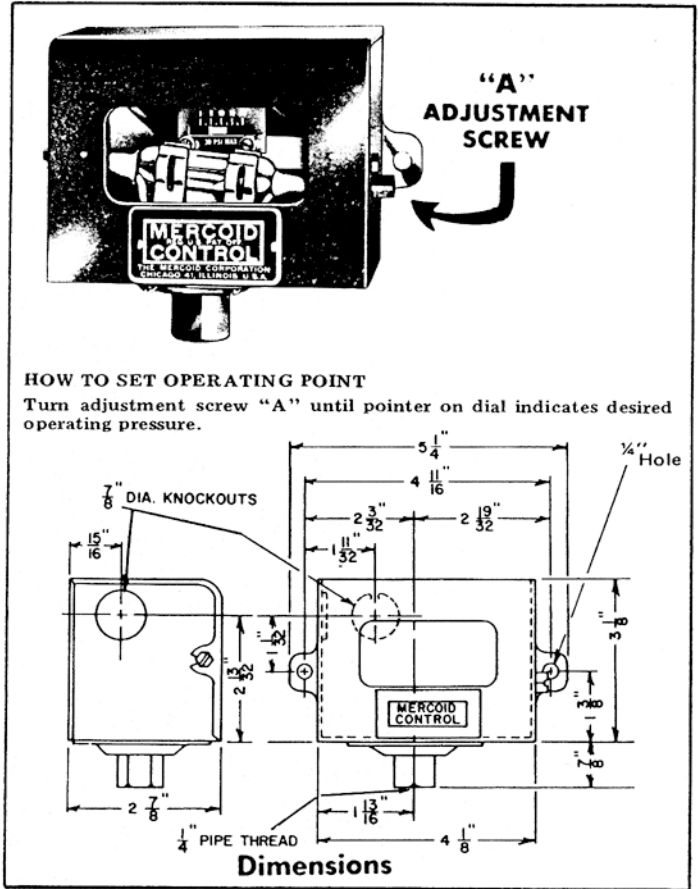
Install control firmly in a **LEVEL POSITION** on a panel or smooth wall surface by means of the two mounting ears. Where pipe mounting is desired, control may be connected by means of the 1/4" I.P.S. connection. **Do not mount control by twisting the case, use a wrench on the square part of the 1/4" bottom pipe connection.**

To level, sight across the two cover screws or check the lower end of the glass opening in cover to see that instrument is lined up horizontally.

WIRING

Wire in accordance with local electrical codes or equipment manufacturer's instructions. See nameplate attached to inside of control case for terminal markings and electrical rating.

Do not overload - See electrical rating on nameplate located inside of control case. Do not oil any parts.



ELECTRICAL RATING

CODE	CODE
A - 4A. 120V. 2A. 240V. AC/DC (single phase AC 1/8 h.p.)	B - 10A. 120V. 5A. 240V. AC/DC (single phase AC 3/4 h.p. DC 1/3 h.p.)
C - Non-Inductive AC heater only: 17A. 120/240/277V. AC Resistive	D - 1/2A. 120V. 1/4A. 240V. AC 1/4A. 120V. 1/8A. 240V. DC

RANGES—DIFFERENTIALS—ELECTRICAL RATINGS Differential Non-Adjustable—(factory set)

ADJUSTABLE OPERATING RANGE PSIG.	SWITCH DIFFERENTIAL WITH POINTER SET AT LOW OR HI END OF SCALE		SWITCH ACTION ON PRESSURE RISE	ELEC. RATING SEE CODE	FOR MEDIA NOT INJURIOUS TO STEEL SILVER SOLDER OR NYLON & BUNA N	FOR MEDIA NOT INJURIOUS TO 316 SS & TEFLON
	LOW	HIGH				
10" Vac. 50" wc RANGE NO. 33	5" wc	6" wc	SP-DT	A	AP-153	AP-41-153
	5" wc	7" wc	SP-ST Opens	B	AP-2	AP-41-2
	5" wc	7" wc	SP-ST Closes	B	AP-3	AP-41-3
	1.5" wc	1.5" wc	SP-ST Closes	D	AP-88	AP-41-88
	2" wc	2" wc	SP-ST Opens	D	AP-89	AP-41-89
1-20 PSIG. RANGE NO. 36	0.3 psig.	0.5 psig.	SP-DT	A	AP-153	AP-41-153
	0.5 psig.	1.0 psig.	SP-ST Opens	B	AP-2	AP-41-2
	0.5 psig.	1.0 psig.	SP-ST Closes	B	AP-3	AP-41-3
	0.75 psig.	1.25 psig.	SP-ST Opens	B&C	AP-36	AP-41-36
	0.75 psig.	1.25 psig.	SP-ST Closes	B&C	AP-26	AP-41-26
	2" wc	4" wc	SP-ST Closes	D	AP-88	AP-41-88
	3" wc	6" wc	SP-ST Opens	D	AP-89	AP-41-89
1-30 PSIG. RANGE NO. 37	0.4 psig.	0.75 psig.	SP-DT	A	AP-153	AP-41-153
	0.5 psig.	1.5 psig.	SP-ST Opens	B	AP-2	AP-41-2
	1.0 psig.	1.5 psig.	SP-ST Closes	B	AP-3	AP-41-3
	1.25 psig.	1.75 psig.	SP-ST Opens	B&C	AP-36	AP-41-36
	1.25 psig.	1.75 psig.	SP-ST Closes	B&C	AP-26	AP-41-26
	3" wc	6" wc	SP-ST Closes	D	AP-88	AP-41-88
	4" wc	8" wc	SP-ST Opens	D	AP-89	AP-41-89
10-125 PSIG RANGE NO. 39	2 psig.	6 psig.	SP-DT	A	AP-153	AP-41-153
	3 psig.	8 psig.	SP-ST Opens	B	AP-2	AP-41-2
	4 psig.	8.5 psig.	SP-ST Closes	B	AP-3	AP-41-3
	4 psig.	10 psig.	SP-ST Opens	B&C	AP-36	AP-41-36
	4 psig.	10 psig.	SP-ST Closes	B&C	AP-26	AP-41-26
	.75 psig.	1.5 psig.	SP-ST Closes	D	AP-88	AP-41-88
	.75 psig.	1.5 psig.	SP-ST Opens	D	AP-89	AP-41-89



**SERIES AP PRESSURE SWITCHES
WITH SNAP ACTION SWITCHES**

INSTALLATION AND OPERATING INSTRUCTIONS

TYPES AP, APW, APWT, APH —With Suffix Numbers:
-7021-153 or -8021-153 -7041-153 or -8041-153
-7021-804 or -7041-804

OPERATION

A variation in control pressure causes the diaphragm to actuate the snap-action switch.

APPLICATION

TYPE AP, APH, APW, APWT with suffix numbers 7021-153 or 8021-153 are for use with mediums not injurious to steel, silver solder, Nylon/Buna N diaphragm.

TYPE AP, APH, APW, APWT with suffix numbers 7041-153 or 8041-153 are for use with mediums not injurious to 316 stainless steel and Teflon covered diaphragm.

MOUNTING — MOUNT IN ANY POSITION

TYPE AP (General Purpose) can be installed on a panel or smooth surface using the two mounting ears or the 1/4" NPT bottom connection. Do not mount by twisting the case, use a wrench on the square part of the 1/4" bottom pipe connection.

TYPE APW—NEMA 3 (Weather-Resistant) 1/4" NPT female bottom connection.

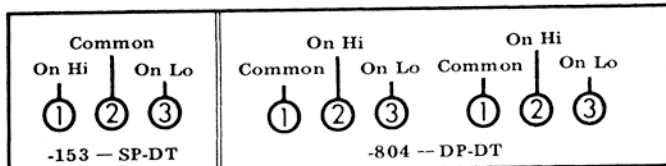
TYPE APWT—NEMA 4 (Water-tight) 1/4" NPT female bottom connection.

TYPE APH (Explosion-Proof) 1/4" NPT connection or use mounting bracket No. PP-135-95.

OPERATING RANGES — DIFFERENTIALS

Operating Ranges PSIG. Adjustable	Order By Range Number	MAX. Surge Press. PSIG	Approximate Switch Differential With Pointer Set At			
			-153		-804	
			LOW	HIGH	LOW	HIGH
10" Vac-50" wc	33	15	8" wc	10" wc	4.5" wc	5" wc
1-20 PSIG	36	60	0.5 psig	1.5 psig	.75 psig	1.5 psig
1-30 PSIG	37	60	0.75 psig	1.5 psig	.75 psig	1.5 psig
10-125 PSIG	39	160	3.0 psig	7.0 psig	1.75 psig	4 psig

ALL TYPES
SINGLE-POLE DOUBLE-THROW (-153) OR
DOUBLE-POLE DOUBLE-THROW (-804) OPERATION



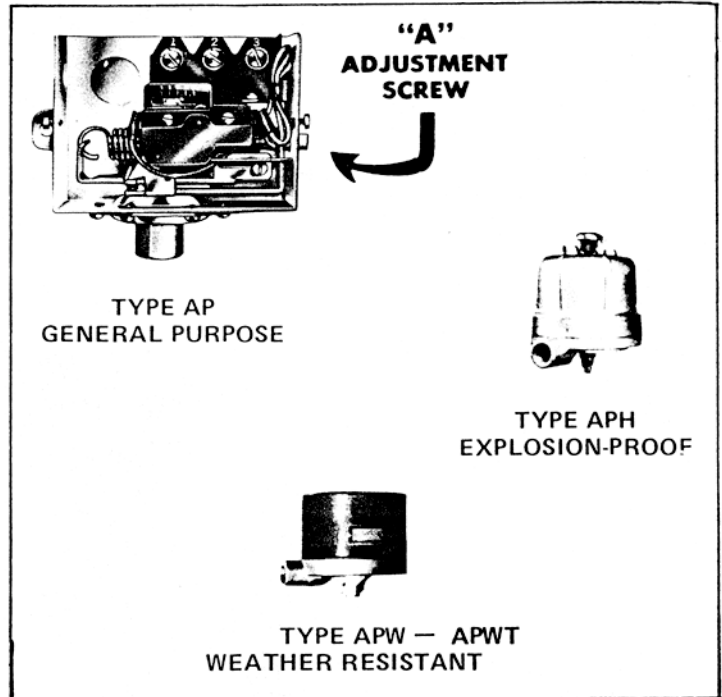
ELECTRICAL RATING

SERIES 7021-153 and 7041-153 — SPDT

15 Amp. max. 120V AC; 8 Amp. max. 240V AC
0.5 Amp. max. 120V DC; 0.25 Amp. 240V DC.
¾ Hp. 120V AC. 1 Hp. 240V AC

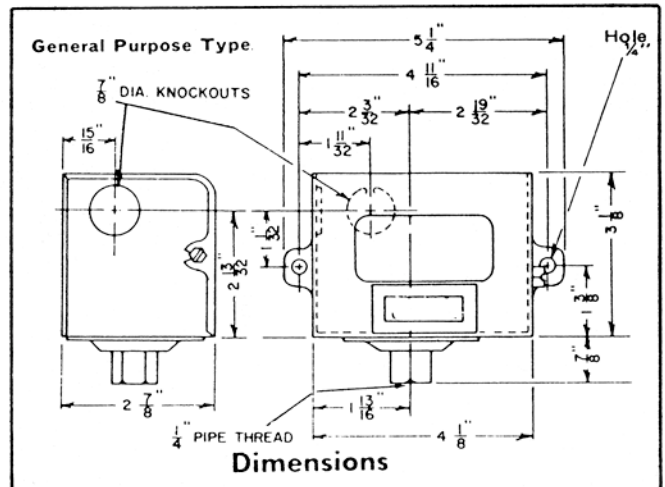
SERIES 8021-153 and 8041-153 — SPDT

15 Amp. 120V AC; 8 Amp. 240 V AC; 4 Amp. 480V AC
0.5 Amp. 120V DC; .25 Amp. 240V DC.
¾ Hp. 120V AC; 1½ Hp. 240V AC.
SERIES 7021-804 and 7041-804 (2 SPDT)
5 Amp. 120/240AC — 30V. DC Resistive



ADJUSTMENTS

Turn adjustment screw "A" (see illustration) until pointer on dial indicates desired operating pressure.



WIRING

Wire in accordance with the National Electrical Code and local regulations. Observe wiring diagram inside enclosure and details below for Type No. and electrical rating. Where control is connected directly into the load circuit it must be wired into hot side of line. Do not overload.

Do Not Oil Any Parts.