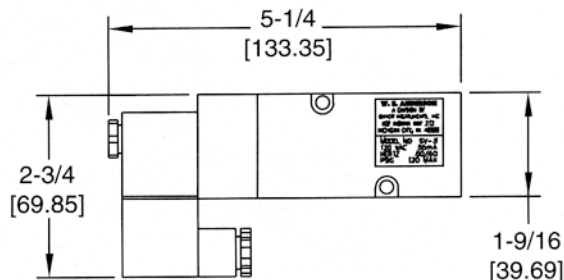
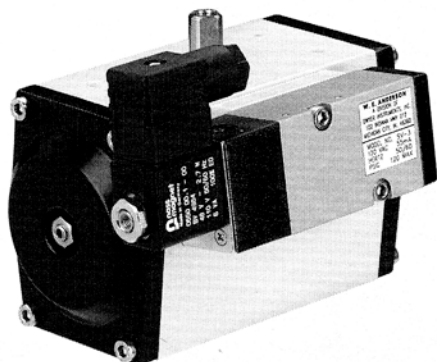




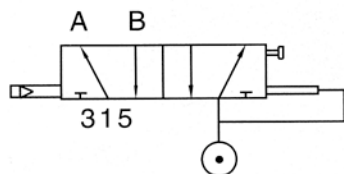
Series SV Solenoid Valve

Specifications – Installation and Operating Instructions



W.E. Anderson direct mount solenoid valves come lubricated and are designed for long life. These solenoid valves are specially designed to be easy to install on pneumatic actuators. The solenoids come equipped with Buna-N O-Rings to seal the valve ports to the body of the actuator. These units can be used with either spring return or double acting actuators where on/off electric operation is required. Standard features include a manual override and safety position by mechanical spring.

OPERATION



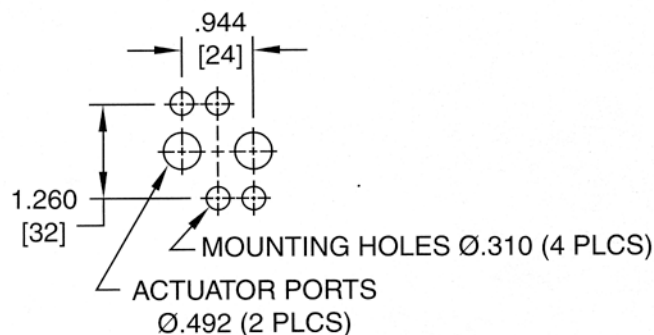
Single Coil (Pneumatic Diagram)

Fig. 1

Port 1 is the supply port and ports 3 and 5 are the exhaust ports. The exhaust port may be equipped with silencers or speed controls to control the actuation time. Ports A and B are the actuator input ports. In the normal position air goes from the supply port (port 1) to port B. During solenoid activation the flow will be from the supply port to port A.

MOUNTING PATTERNS

The W.E. Anderson solenoid valve comes with standard NAMUR Mounting.



NAMUR Mounting VDI/VDE 3845

Fig. 2

PHYSICAL DATA

Power Supply: 12, 24 VDC; 24, 120, 240 VAC.

Min. Pressure: 20 psig (1.4 bar).

Max. Pressure: 120 psig (8.3 bar).

Media Temperature Limits: -40° to 140°F (-40° to 60°C).

Port Connection: 1/4" NPT.

Body: Extruded Aluminum.

INSTALLATION

Note: Make sure that Port O-Rings are correctly placed inside O-Ring groove.

1. Affix solenoid valve to actuator and tighten screw to 70 in-lbs.
2. Disconnect solenoid wire hood.

Note: Terminal designation (1) Positive (2) Neutral (3) Ground.

3. Energize solenoid valve several times and test for leaks and proper operation. Note: Solenoid nut should be hand tight.

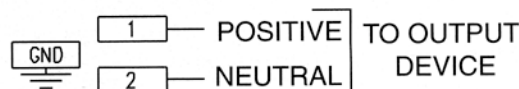
MANUAL OVERRIDE

The W.E. Anderson solenoid valve comes equipped with a manual override. A small screw head located between the valve body and the coil allows for the overriding of the solenoid if necessary. The normal position for the screw head is pointing toward the 0. Rotation of the screw head in the counter clockwise direction will manually override the solenoid and lock the solenoid in the disengaged position until the screw head is returned to its original position.

Solenoid Classification

The W.E. Anderson solenoid valve is designed to the NEMA 4 and 4X standard.

NEMA 4, 4X: Watertight and Dust tight – indoor and outdoor. Protects against windblown dust, rain, splashing water and hose directed water. Also corrosion resistant.



Wiring Diagram